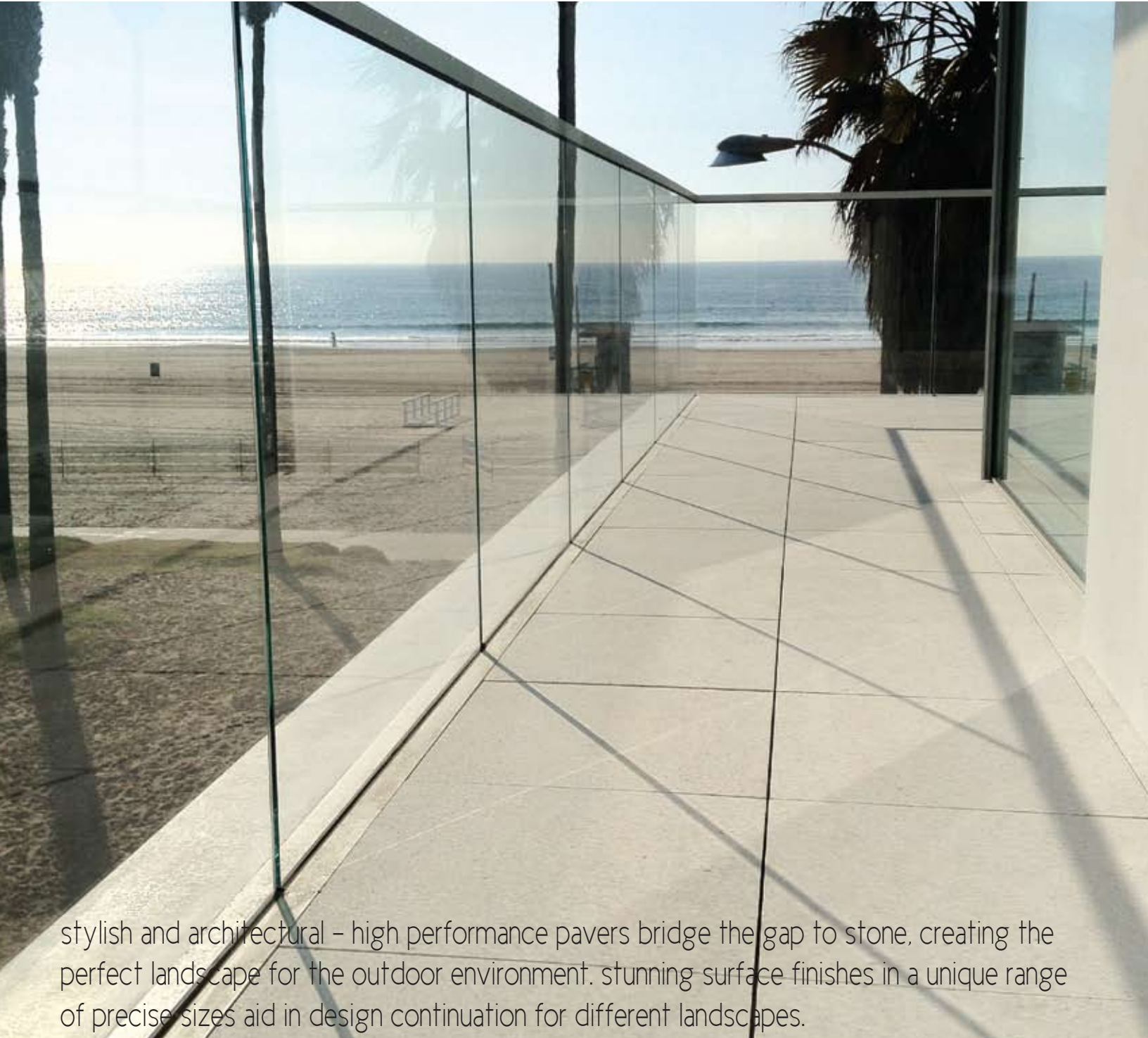


# trails

premium concrete pavers



stylish and architectural – high performance pavers bridge the gap to stone, creating the perfect landscape for the outdoor environment. stunning surface finishes in a unique range of precise sizes aid in design continuation for different landscapes.

collaborate  
concrete-collaborative.com  
sales@concrete-collaborative.com

concrete  
collaborative

# trails

colors



ivory



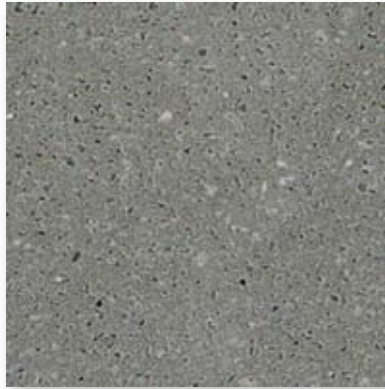
acier



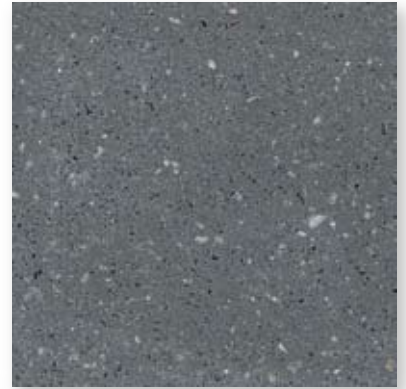
taupe



pewter



fossil



coal

each paver features natural tonal shifts and individual character unique to our quality refined concrete. trails premium pavers offer a stunning spectrum of designer colors in premium surface finishes to suit a range of architectural applications.

[collaborate with us](#): additional colors available to suit your project needs.

[collaborate](#)  
concrete-collaborative.com  
sales@concrete-collaborative.com

concrete  
collaborative

# trails

## sizes

20 x 20"

20 x 30"

30 x 30"

6 x 36"

18 x 36"

12 x 48"

24 x 48"

3 x 18"

6 x 18"

12 x 18"

3 x 24"

6 x 24"

12 x 24"

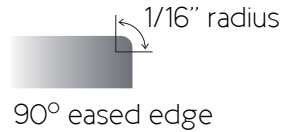
24 x 24"

### thickness

mortar: 3/4" or 1"

sand or pedestal: 2"

### edge profile



[collaborate with us](#): precision paver formats create clean lines and a framework for design. we offer standard coping to be used on stair treads, pool coping and other finished edge needs.



# trails

premium concrete pavers

trails premium architectural pavers are dimensionally accurate and can be simply mortar-set, sand-set or pedestal-set in accordance with standard masonry practices depending on your project needs.

once installed, the surface should be thoroughly cleaned and sealed with a quality penetrating sealer. cleaning pads and sealer are available from concrete collaborative.

for further information visit us at [concrete-collaborative.com](http://concrete-collaborative.com)

