

ventura

real concrete topping

a revolutionary innovation. ventura is 100 percent real concrete –not plasticky resin– creating a modern and sophisticated floor finish with the inherent character and organic beauty of concrete. our experts have refined the highest-quality raw material blends in custom colored mixes that are engineered to be thin, high performance, color fast and durable.

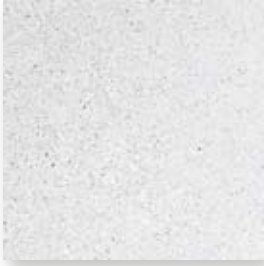
product summary

thickness:		
indoor	1/2"	13mm
outdoor	5/8"	15mm
weight:	5lbs/sqft	120lbs/cubicft
50lb bag:	7sqft/bag @1/2"	
choose:	color + aggregate + finish	

recommendation

substrate:	structurally sound and level repair cracks
environment:	controlled or above 50°F
joints:	honor all expansion / control joints max span between joints 12' specify preferred terrazzo strip

colors



alabaster



shale



fossil



ebony

ventura can be specified with fine, flekk or terrazzo aggregate. full concrete collaborative color range is also available.



engage a polished concrete or terrazzo professional. ventura is a non-structural concrete topping. variation and microcracking expected. follow installation instructions. concrete collaborative provides primer, monofilm, silcoseal and prosoco to streamline sourcing. always produce a mock up. contact the concrete collaborative technical team with any questions.

collaborate

concrete-collaborative.com
sales@concrete-collaborative.com

concrete
collaborative

ventura

installation and finishing

1 - preparation

grind or shot blast existing slab and repair all cracks, dips, voids or other imperfections
shoot levels and place 1/2" (indoor) edge strips as designated in specification
blend primer with water to a paint like consistency and apply to surface using 3/8" nap roller
allow 24 hours for primer to set up
apply a second coat of primer immediately before pour so that primer is still wet/tacky
apply primer evenly, do not allow to pool
do test panel or mock up with material first

2 - placement & finishing

mix concrete in workable batches using a mortar mixer (not a hippo or paddle mixer)
ensure accurate mixing procedure and correct water volume is added (do not over-water mix)
water is 2.2-2.4 litres or 2.3-2.5 quarts per bag, use warm water on cool days, cool water on hot days
place mix evenly into bays, screed to level to edge strip elevations
once level, roll the product in both directions with 3/8" spiked roller to flatten and remove air
trowel or smooth if desired, do not overwork
spray immediately with mono-film at 400sqft/gallon and roll out and set 12-24 hours
spray with nox-crete silcoseal select at 400sqft/gallon and cover once set
protect the floor and allow to cure minimum 14 days (longer the better)

3 - grind & grout

grind with metals (30, 70, 120)
grout using prosoco grind-n-fill

4 - finish

use resin pads
rough 50, matte 200, honed 400
apply a coat of ls/cs densifier
apply prosoco polishguard sealer (use a microfiber applicator - in a natural finish)
re apply floor protection during construction

5 - maintain

mop regularly with warm water and neutral detergent (non-acidic)
wipe up spills immediately and spot clean floor
concrete is particularly sensitive to acids e.g. lemon juice
the clean and seal process above is normally one time only
for added protection against spills, the clean and seal process can be repeated using client discretion

equipment: mortar mixer (not hippo or paddle mixer), 3/8" spiked roller, screed, magnesium trowel, paddle mixer (primer), divider strips, water measuring, 3/8" nap roller (primer), pump sprayer, microfiber applicator, resin pads, floor protection

general advice: allow bags to acclimate to installation environment, place ventura above 50degrees farenheight & in stable conditions, direct sunlight or wind can affect cure, places more like terrazzo not self leveling (mix does NOT flow)

refer to manufacturers recommendations for monofilm, silcoseal, grout, metal and resin pads, densifier and sealer